



SCISSOR LIFT

Equipment Operator Safety Certification Course

Target Audience: This course is designed for DOT, municipal public works, parks, streets/roads, water, waste water, distribution/collection and/or storm water utility workers or any other government entity employees who may be called on to operate this equipment.

The course is also recommended for emergency backup personnel who may be called on to use the equipment in special circumstances such as after a natural disaster or any other reason where no other operators are available. Other recommended participants are crew leaders, division supervisors, agency safety officers, department safety coordinators, general safety trainers and/or fleet team members.

Additional applications would be as an orientation for new operators and a good refresher for seasoned operators.

Trainees will receive a Training Certificate!



To Register or Schedule Training:

Email: info@wetrainamerica.com

Telephone: 813.995.8872 (Tony)

Website: WeTrainAmerica.com

Classroom Summary

Introduction: Why is operator safety certification advisable? When is a scissor lift reach machine a viable tool? These questions are answered along with a consideration of city/county equipment accident case studies.

Equipment Orientation: Includes a review of the basic components and features of the equipment, including power systems and control overrides.

Fall Protection and Fall Arrest Systems: Consideration of the personal protective equipment (PPE) worn by operators and its proper fit and attachment points.

Basic Lift Operations: Preparing the equipment for aerial operations, engagement of wheel stabilizers, removal of travel locks and basket entry.

Vehicle Placement Considerations: Reviewing the work zone's stable surface areas, any overhead hazards, lane closures and/or tight spaces.

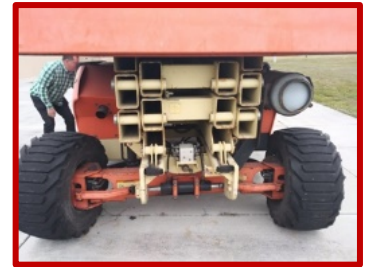
External Work Zone Hazard Analysis: Vehicular and pedestrian traffic strategies are summarized by referencing MUTCD Chapter 6 Temporary Traffic Control sections. This includes work in travel lanes, at the roadside and when impacting sidewalk use.

Internal Work Zone Set-up: Basic set up of a scissor lift work zone is discussed, including use of cones, barricades, caution tape and other barriers. Discussion includes positioning of essential and non-essential equipment and the declaring of minimum distances for separating machinery and pedestrian workers.

Material Lifting/Hauling Limitations: Review of weight determination/machine limits and placement options.

Emergencies and Rescue: A review of fall recovery / self-rescue, ground rescue, and public safety rescue.

Equipment Inspection and Use of Pre-Job Briefing Checklists: This section reviews a sample pre-job briefing and checklist form that can be used as a tool to promote scissor lift safety.



Hands-On Exercises—Scissor Lift:



- Initial Inspection and Start-Up
- Work Zone and Machine Set-up
- General Safe Operation and Movement
- Fall Prevention
- Deck Extensions and Gates
- Parking and Stowing