



GRADALL EXCAVATOR

Basic Heavy Equipment Operation & Safety Training Course

Target Audience: This course is designed specifically for DOT, municipal public works, parks, streets/roads, water, wastewater, distribution/collection and/or storm water utility workers or any other government entity employees who may be called on to operate this equipment.

The course is also recommended for emergency backup personnel who may be called on to use the equipment in special circumstances such as after a natural disaster or any other reason where no other operators are available. Other recommended participants are crew leaders, division supervisors, agency safety officers, department safety coordinators, general safety trainers and/or fleet team members.

Additional applications would be as an orientation for new operators and a good refresher for seasoned operators. As this course has a *Train the Trainer* component, it is also recommended for in-house assigned equipment trainers.

Trainees will receive a Training Certificate!



**For more information or to inquire
about future training events:**

Email: info@wetrainamerica.com

Telephone: 813.995.8872

Website: WeTrainAmerica.com

Classroom Part

Accident Case Studies: Reviews a recent history of public sector Gradall excavator and similar mobile equipment accidents. Relative OSHA Standards and general Gradall work zone safety issues are considered.

Equipment Orientation: Includes the viewing of manufacturer's operations and safety videos that introduce each machine component, identifies all controls and their function(s) and discusses basic safe operating principles.

External Work Zone Set-up (Temporary Traffic Control): Vehicular and pedestrian traffic strategies are summarized by referencing MUTCD Chapter 6 Temporary Traffic Control sections. This includes work in travel lanes, at the roadside and when impacting sidewalk use.

Internal Work Zone Set-up (Perimeters and Barriers): Basic set up of a Gradall excavator work zone is discussed, including use of cones, barricades, caution tape and other barriers. It includes positioning of essential and non-essential equipment and the declaring of minimum distances for separating machinery and pedestrian workers.

Safe Mounting, Seatbelts, No-Rider Rules and Prohibited Uses: Covers falling object protective structures (FOPS), rollover protective structures (ROPS), vehicle restraining devices and rider-passenger rules. It also covers the improper use of machinery as aerial platforms or man lifts.

Imperative Operator Safety Rules: This section covers the 12 absolute rules that operators must obey to prevent serious accidents.

Imperative Essential Pedestrian Worker Rules: Includes a number of close proximity rules for employees acting as spotters or who perform special "close-to-machine" tasks such as final pipe positioning or installing plugs.

Imperative Non-Essential Pedestrian Worker Rules: Includes a number of close proximity rules for non-operators and motivates all workers to watch for conditions that are indicators of potential mobile equipment and work zone accidents.

Special Gradall Operation Tasks: Use of hand signals, rigging, tag lines and handling suspended loads, travel on roads and unique features are covered here.

Preparing for an Unattended Work Zone: Discusses issues related to vacated work zones; overnight, waiting for part(s) or waiting for other crew situations and how machinery should be secured when left unattended.

Equipment Inspection and Use of Pre-Job Briefing Checklists: This section reviews a sample pre-job briefing and checklist form that can be used as a tool to promote Gradall excavator safety.

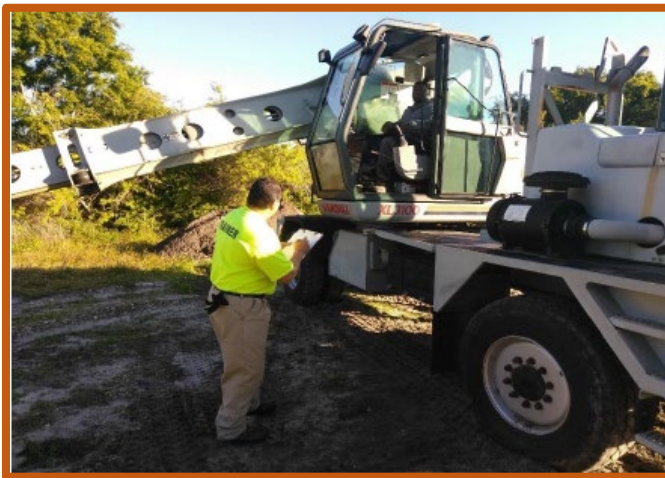


Classroom:



- Machine Orientation
- Work Zone Hazard Analysis
- Job Set-Up—Pre-Job Checklists
- Manufacturer Operations and Safety Videos
- ...and more!

Outside Exercises—Hands-On Operations:



- Machine Inspection
- Start Up
- Travel on Roadways
- Front and Rear Operations
- Excavation
- Digging Ditches and Trenches
- Lifting and Moving Debris
- ...and more!