



AERIAL REACH

Operation & Safety Certification Course

Target Audience: This CEU-accredited course (DS/DW/WW-02094006 at 0.7 CEU) is designed for DOT, municipal public works, parks, streets/roads, water, waste water, distribution/collection and/or storm water utility workers or any other government entity employees who may be called on to operate this equipment.

The course is also recommended for emergency backup personnel who may be called on to use the equipment in special circumstances such as after a natural disaster or any other reason where no other operators are available. Other recommended participants are crew leaders, division supervisors, agency safety officers, department safety coordinators, general safety trainers and/or fleet team members.

Additional applications would be as an orientation for new operators and a good refresher for seasoned operators.

Trainees will receive a Training Certificate!



For more information or to inquire about upcoming training dates:

Email: info@wetrainamerica.com

Telephone: 813.995.8872

Website: WeTrainAmerica.com

Classroom Summary

Introduction: Why is operator safety certification advisable? When is an aerial reach machine a viable tool? These questions are answered along with a consideration of city/county equipment accident case studies.

Equipment Orientation: Includes a review of the basic components and features of the equipment, including power systems and control overrides.

Fall Protection and Fall Arrest Systems: Consideration of the personal protective equipment (PPE) worn by operators and its proper fit and attachment points.

Basic Boom and Basket Operations: Preparing the equipment for aerial operations, engagement of wheel stabilizers, removal of travel locks and basket entry.

Vehicle Placement Considerations: Reviewing the work zone's stable surface areas, any overhead hazards, lane closures and/or tight spaces.

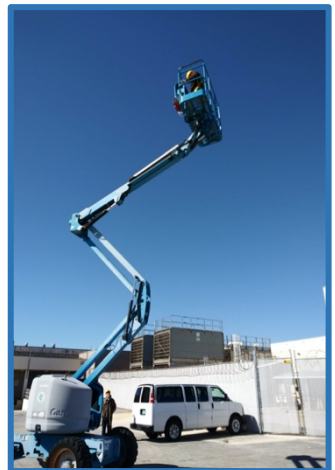
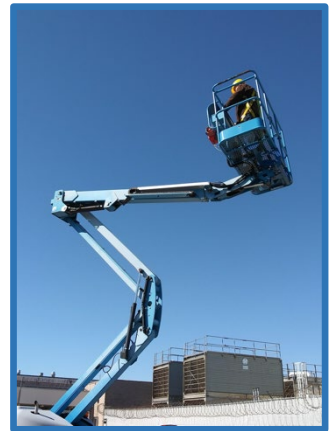
External Work Zone Hazard Analysis: Vehicular and pedestrian traffic strategies are summarized by referencing MUTCD Chapter 6 Temporary Traffic Control sections. This includes work in travel lanes, at the roadside and when impacting sidewalk use.

Internal Work Zone Set-up: Basic set up of an aerial lift work zone is discussed, including use of cones, barricades, caution tape and other barriers. Discussion includes positioning of essential and non-essential equipment and the declaring of minimum distances for separating machinery and pedestrian workers.

Tree Work: How to use chain saws while aloft, including felling and limbing, and OSHA rules related to trees and utility lines.

Emergencies and Rescue: A review of fall recovery / self-rescue, ground rescue, and public safety rescue.

Equipment Inspection and Use of Pre-Job Briefing Checklists: This section reviews a sample pre-job briefing and checklist form that can be used as a tool to promote aerial reach safety.



Hands-On Exercises—Aerial Reach:

- Start-Up and Initial Inspection
- Work Zone Set-up
- Stabilizer Jacks / Outrigger Set-up
- Boom and Basket Set-up
- Practice of Safe and Smooth Aerial Operations
- ...and more!