



# EXCAVATOR/TRACKHOE MINI-EXCAVATOR

## Operation & Safety Certification Course

**Target Audience:** This CEU-accredited course (#DW/DW/WW02094012 at 0.7 hr) is designed for DOT, municipal public works, parks, streets/roads, water, wastewater, distribution/collection and/or storm water utility workers or any other government entity employees who may be called on to operate this equipment.

**The course is also recommended for** emergency backup personnel who may be called on to use the equipment in special circumstances such as after a natural disaster or any other reason where no other operators are available. Other recommended participants are crew leaders, division supervisors, agency safety officers, department safety coordinators, general safety trainers and/or fleet team members.

**Additional applications would be** as an orientation for new operators and a good refresher for seasoned operators. As this course has a *Train the Trainer* component, it is also recommended for in-house assigned equipment trainers.

Students will receive a Training Certificate!



**For more information or to inquire  
about upcoming training dates:**

**Email:** [Info@WeTrainAmerica.com](mailto:Info@WeTrainAmerica.com)

**Telephone:** 813.995.8872

**Website:** [WeTrainAmerica.com](http://WeTrainAmerica.com)

# Classroom Part

**Accident Case Studies:** Reviews a recent history of public sector excavator/trackhoe/mini-excavator and similar mobile equipment accidents. Relative OSHA Standards and general equipment work zone safety issues are considered.



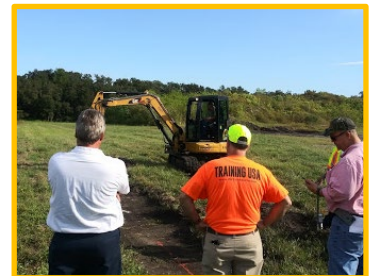
**Equipment Orientation:** Includes the viewing of owner's operator video that introduces each machine component, identifies all controls and their function(s) and discusses basic safe operating principles.

**External Work Zone Set-up (Temporary Traffic Control):** Vehicular and pedestrian traffic strategies are summarized by referencing MUTCD Chapter 6 Temporary Traffic Control sections. This includes work in travel lanes, at the roadside and when impacting sidewalk use.



**Internal Work Zone Set-up (Perimeters and Barriers):** Basic set up of an excavator/trackhoe/mini-excavator work zone is discussed, including use of cones, barricades, caution tape and other barriers. It includes positioning of essential and non-essential equipment and the declaring of minimum distances for separating machinery and pedestrian workers.

**Excavating Issues:** Covers utility location, shoring for excavator or trackhoe proximity, inclines, surface stability, safe equipment travel areas and equipment attitude/position.



**Safe Mounting, Seatbelts, No-Rider Rules and Prohibited Uses:** Covers falling object protective structures (FOPS), rollover protective structures (ROPS), vehicle restraining devices and rider-passenger rules. It also covers the improper use of machinery as aerial platforms or man lifts.

**Imperative Operator Safety Rules:** This section covers the 12 absolute rules that operators must obey to prevent serious accidents.



**Imperative Essential Pedestrian Worker Rules:** Includes a number of close proximity rules for employees acting as spotters or who perform special "close-to-machine" tasks such as final pipe positioning or installing plugs.

**Imperative Non-Essential Pedestrian Worker Rules:** Includes a number of close proximity rules for non-operators and motivates all workers to watch for conditions that are indicators of potential mobile equipment and work zone accidents.

**Special Operation Tasks:** Use of hand signals, rigging, tag lines and handling suspended loads, travel on roads and "trailer" are covered here, as well as operations unique to this piece of equipment.



**Preparing for an Unattended Work Zone:** Discusses issues related to vacated work zones; overnight, waiting for part(s) or waiting for other crew situations and how machinery should be secured when left unattended.

**Equipment Inspection and Use of Pre-Job Briefing Checklists:** This section reviews a sample pre-job briefing and checklist form that can be used as a tool to promote excavator/trackhoe/mini excavator safety.

## Classroom:



- Machine Orientation
- Work Zone Hazard Analysis
- Job Set-Up—Pre-Job Checklists
- ...and more!

## Outside Exercises:



- Equipment Walk-Around Inspection
- Start Up Procedures
- Throttle Settings
- Trench Digging and Back Filling
- Ditch Cleaning (Optional – On Request)
- Travel With/Without Loads
- Loading Dump Trucks (Optional – On Request)
- Safe Spotter Positions and Signals
- ...and more!