



Water / Wastewater Utility Plant Safety Certification

Target Audience: This CEU-accredited two-day training course is specifically for licensed and unlicensed water utility workers covering *Lockout Tagout*, *Confined Space Entry*, *Basic Electrical* and *Hazardous Chemical* safety elements. Your water / wastewater utility employees should attend to sharpen safety awareness and hone maintenance skills. This course is taught through a series of half-day modules, with each section providing opportunities for group discussion around practical examples and real-world scenarios.

The course is also recommended for emergency backup personnel who may be called on in special circumstances such as after a natural disaster or any other reason where typical staff are not available or need extra support. Other recommended participants are crew leaders, division supervisors, agency safety officers, department safety coordinators, general safety trainers and/or risk management personnel.

All students will receive a Training Certificate upon completion!



For more information or to inquire about upcoming training dates:

Email: info@wetrainamerica.com

Telephone: 813.995.8872

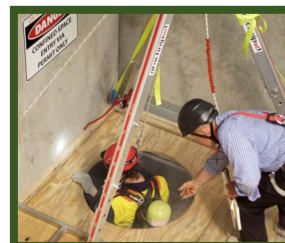
Website: WeTrainAmerica.com

COURSE OVERVIEW: This two-day course covers all the topics critical to keeping your employees safe, including:

- Job Site Hazard Analysis
- Proper Selection & Use of Personal Protective Equipment (PPE)
- Fall Prevention
- Basic Electrical Safety
- Lockout Tagout – Control of Hazardous Energy
- Chemical Safety
- Hand Tool Safety



ACCIDENT CASE STUDIES: Each module typically includes several relevant worksite accidents as they have been tracked over the past 20 years. Recent accident case studies are also covered showing real news agency newscast clips or news website photos to confirm authenticity of accidents.



MODULE: Hazardous Chemical Safety

This module focuses on the basic information concerning the OSHA HAZCOM program and hazardous chemicals. The course endeavors to ensure that workers who are occupationally exposed to hazardous chemicals understand and learn how to minimize the associated hazards. Covered elements can include SDS's (Safety Data Sheets), proper labeling/signage/inventorying, correct methods for receiving/transportation/security, and emergency response protocols, to name a few.



MODULE: Basic Electrical Safety

Participants will learn the principles of electrical safety as they relate to lockout/tagout, worksite safety engineering, safe work practices and use of protective devices/products, special clothing and personal protective equipment. Basic electrical theory will provide participants with an understanding of how electricity works, which conductors are energized, neutral or grounded, what nominal voltages (phases) are common to water utility facilities and other aspects of basic plant and lift station electrical facilities. Module also includes information on arc flash potential and protection from arc flash.



MODULE: Confined Space Entry Safety

This module covers basic principles related to safe work practices for most types of municipal confined space entry situations. Along with providing a comprehensive *Confined Space Entry* policy (and implementation methods) for immediate use, this course introduces other related hazards specific to water/wastewater/stormwater facilities and features new safety products and accident prevention measures. Participants will discuss specific work site safety analysis and learn how to develop a protocol for each permit-required confined space location.



MODULE: Lockout Tagout Safety

As the other modules provide training on the lockout tagout protocols for electrical and chemical hazards, this module primarily focuses on lockout tagout as it relates to mechanical maintenance safety. Mechanical hazards relative to maintenance, repair, adjustment, parts replacement, strainer changeout, regular cleaning, and mechanical or operational problems (aka jams) of machinery or equipment are identified, with an emphasis on the hazardous energy sources and lockout tagout concepts applicable to the agency's work environment. Module includes the review of the principles of lockout tagout with worksite safety engineering, safe work practices, other protective devices and products, special clothing and proper use of personal protective equipment.