



Grapple Truck

Operations & Safety Training

Target Audience: This course is designed specifically for DOT, municipal public works, parks, streets/roads, water, wastewater, distribution/collection and/or storm water utility workers or any other government entity employees who may be called on to operate grapple trucks.

The course is also recommended for emergency backup personnel who may be called on to use a grapple truck in special circumstances such as after a natural disaster or any other reason where no other operators are available. Other recommended participants are crew leaders, division supervisors, agency safety officers, department safety coordinators, general safety trainers and/or fleet team members.

Additional applications would be as an orientation for new operators and a good refresher for seasoned operators.

All Participants Receive a Certificate of Completion!



For more information or to inquire about future training events:

Email: info@wetrainamerica.com

Telephone: 813.995.8872

Website: WeTrainAmerica.com

Classroom Part

Accident Case Studies: Reviews a recent history of public sector grapple truck accidents. Relative OSHA Standards and general work zone safety issues are considered.

Equipment Orientation: Includes the viewing of equipment's operator video that introduces each machine component, identifies all controls and their function(s) and discusses basic safe operating principles.

External Work Zone Set-up (Temporary Traffic Control): Vehicular and pedestrian traffic strategies are summarized by referencing MUTCD Chapter 6 Temporary Traffic Control sections. This includes work in travel lanes, at the roadside and when impacting sidewalk use.

Internal Work Zone Set-up (Perimeters and Barriers): Basic set up of a heavy equipment work zone is discussed, including use of cones, barricades, caution tape and other barriers. It includes positioning of essential and non-essential equipment and the declaring of minimum distances for separating machinery and pedestrian workers.

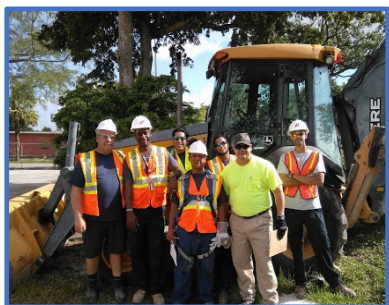
Commercial Vehicle Driver Safety Rules: This covers the rules that operators must obey to prevent serious accidents.

Essential Pedestrian Worker Rules: Includes a number of close proximity rules for employees acting as spotters or who perform special "close-to-machine" tasks.

Crane & Boom Operations Safety: This section makes sure operators understand concepts handling suspended loads and maximum load capacity at different angles and extension lengths.

Special Commercial Vehicle and Heavy Equipment Operation Tasks: Use of hand signals, rigging, tag lines, travel on roads, trailering and vehicle backing are covered here.

Equipment Inspection and Use of Pre-Job Briefing Checklists: This section reviews a sample pre-job briefing and inspection checklist form that can be used as a tool to promote safety.



Classroom:



Vehicle and Equipment Orientation

- Machine Orientation
- Work Zone Hazard Analysis
- Job Set-Up—Pre-Job Checklists
- Imperative Operator / Safety Guidelines
- Special Operation Tasks
- ...and more!

Outside Exercises—Hands-On Operations:



- Vehicle Walk-Around Inspection
- Vehicle Entry and Start-Up
- Basic Controls
- Air Brake Testing Procedures
- Travel on Roadways
- Travel on Job Sites
- Vehicle Backing Exercises
- Driver/Spotter Exercises
- Loading and Load Dumping
- ...and more!